



# NEW HOLLAND

## E20.2/22.2/27.2SR

NEW HOLLAND KOBELCO



	E20.2SR	E22.2SR	E27.2SR
NET FLYWHEEL POWER	17 kW - 23 hp	17 kW - 23 hp	17 kW - 23 hp
OPERATING WEIGHT (MAX)	2 230 kg	2 370 kg	2 760 kg
REAR END SWING RADIUS	700 mm	740 mm	750 mm
BUCKET CAPACITY	0.035 - 0.088 m <sup>3</sup>	0.035 - 0.088 m <sup>3</sup>	0.035 - 0.088 m <sup>3</sup>

 **NEW HOLLAND**

PROVEN PERFORMANCE

# E20.2/22.2/27.2SR\*

## PERFORMANCE

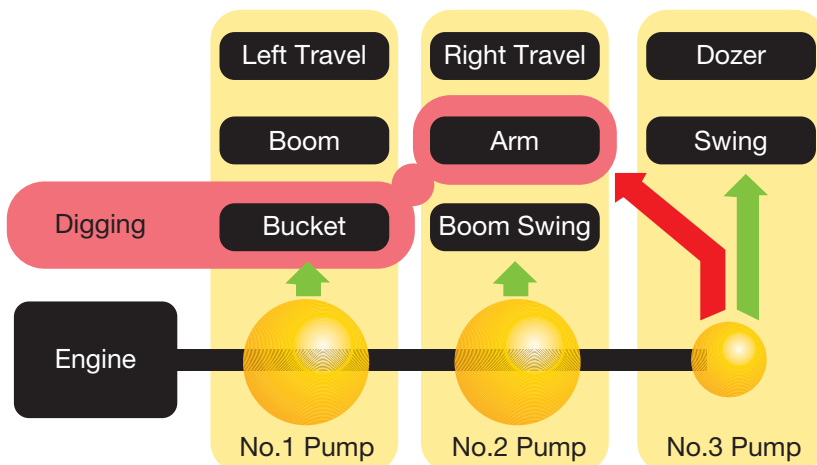
FAST, FULL-POWERED  
DIGGING AND LEVELLING



### DOZER BLADE SHAPE

- Conventional dozer blades simply push the earth straight ahead and the earth spills down behind the blade. Our new blade design solves this problem by forming the earth into an arc that always falls forward. Because this prevents earth from falling behind the blade, only “one pass” is needed.

POWERFUL AND EFFICIENT DOZER  
PERFORMANCE FOR OUTSTANDING  
LEVELLING OPERATIONS



### INTEGRATED-FLOW PUMP SYSTEM (THREE PUMPS) FOR TOTAL SIMULTANEOUS MOVEMENTS

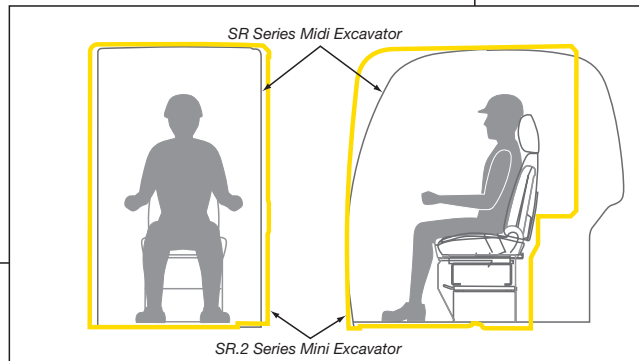
- The instant the machine begins to dig, extra output from the third pump (which otherwise powers the swing and dozer circuits) is directed to the arm circuit for added power. This ensures fast and smooth arm operation even under heavy loads.



# COMFORT

## SPACIOUS WORK ENVIRONMENT

- “High Space” cab with perfect visibility in all directions thanks to the wide glass surface and transparent cab roof. Extremely low noise level and effective reduction of vibrations. All controls are within hand reach and in ergonomic position: more than a “living room” cab for maximum operator comfort.
- The floor space has been broadened and the sliding range of the seat has been increased to give operators plenty of foot room. Wide operational space with more room between the left and right control consoles.





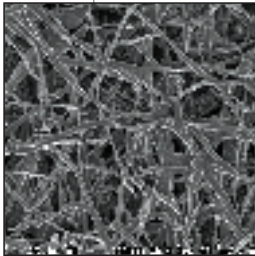
# E20.2/22.2/27.2SR

## MAINTENANCE AND DURABILITY

### EINFACHE WARTUNG EASY MAINTENANCE

- Start-up checks are essential for safe and reliable machine operation. With the SR.2 machines, all start-up checks can be performed at ground level, with an easy-to-understand layout and cover design that simplify access and reduce check times.

CONVENTIONAL FILTER



### NEW HOLLAND EXCLUSIVE FINE FILTER

- This exclusive super-fine filter is environmentally friendly, lasts 1000 hours, and easy to replace.

SUPER FINE FILTER



### HIGH DURABILITY

Whether you are digging, loading, lifting or levelling, it is the attachment that provides the key to better productivity. Our new high-tensile steel front attachment, ensures that you can virtually handle any application. Similarly the cross-section area of the box-shaped boom has been increased for added strength.

#### Boom flexing resistance

Lengthwise: **12% UP**

Lateral: **17% UP**

Forged boom top  
Self-locking pins firmly lock the bottom and arm to prevent the boom top from opening laterally

# SPECIFICATIONS



## MAIN FEATURES

Net flywheel power (ISO14396) .....	17 kW/23 hp
Operating weight with steel shoes	
canopy .....	2230/2620 kg
cab .....	2370/2760 kg
Maximum digging depth .....	2650/2790 mm
Breakout force: bucket .....	20.0/22.0 kN
dipperstick (1120 mm) .....	14.0/15.0 kN
Transport length .....	3820/4130 mm
Transport width .....	1400/1500 mm
Transport height .....	2460/2500 mm



## ENGINE

Make .....	YANMAR
Model .....	3TNV82A-SYB
Type .....	4-stroke diesel, direct injection
Number of cylinders .....	3
Displacement .....	1330 cm <sup>3</sup>
Rated speed .....	2200 rpm

**“Auto-Idling”** as standard.  
*Tier 2 emissioned engine conforms to 97/68/CE STAGE 2 Rules*



## ELECTRICAL SYSTEM

Batteries .....	1 x 64 Ah
Voltage .....	12 V
Alternator .....	40 A
Starter motor .....	1.7 kW



## HYDRAULIC SYSTEM

**S.H.S. (Smart Hydraulic System)** with two axial piston variable displacement pumps and one gear pump for completely fully simultaneous movements, including blade and slewing.

The three pumps ensure full use of all installed hydraulic power in individual and combined movements.

Pumps:

- Variable displacement hydraulic pumps .....	axial piston type
Total delivery .....	2 x 26 l/min
Gear pump delivery .....	14 l/min
Maximum operating pressure .....	230 bar



## SWING

Hydraulic motor .....	axial piston type
Swing speed .....	8.7 rpm
Swing brake .....	automatic
Boom slewing angle:	
- left .....	60°
- right .....	55°

Additional bolted counterweight is available when “High stability” performance is required.

Weight .....	+ 172 kg
Rear end swing radius .....	+ 74 mm

Minimum (700/750 mm) rear end swing radius ensures upperstructure to remain within track overall dimensions.



## UNDERCARRIAGE

Length of track on ground .....	1490/1590 mm
Gauge .....	1150/1250 mm
Shoe width (Rubber/Steel) .....	250 mm
Ground pressure .....	from 0.26/0.28 to 0.29/0.31 bar
Upper lower rollers .....	0-3/1-4
Travel speeds .....	2

**“Automatic DownShift”** as standard

Travel speed range (Rubber tracks) .....	2.3/4.1 km/h
Travel speed range (Steel tracks) .....	2.5/4.2 km/h
Maximum continuous slope .....	58% (30°)



## BLADE

Width x height .....	1400/1500 x 300 mm
Blade lift .....	425/445 mm
Blade lower .....	290/335 mm



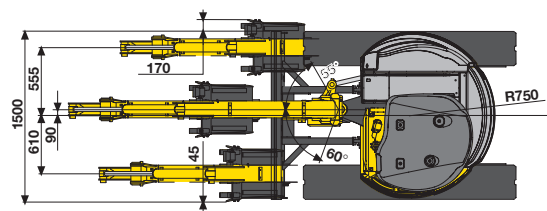
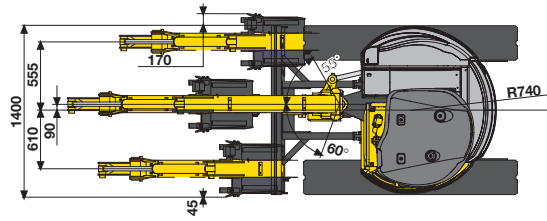
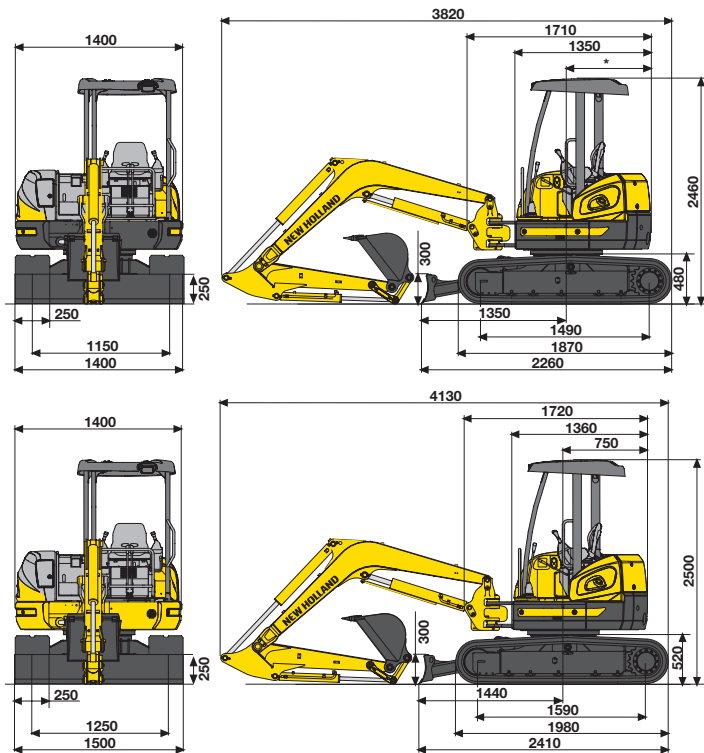
## CAPACITIES

	litres
Fuel .....	28.0
Coolant .....	3.8
Engine oil .....	5.5
Hydraulic system .....	25.0



# E20.2/22.2/27.2SR

## DIMENSIONS (mm) - OPERATING WEIGHT



\*E20.2SR: 700 mm  
\*E22.2SR: 740 mm

## DIGGING PERFORMANCE

(cab/canopy)

### E20.2-22.2SR

DIPPERSTICK	mm	980	1330 (standard)
A	mm	2030/1800	2070/1900
B	mm	4060	4400
C	mm	4190	4520
D	mm	2470/2720	2650/2950
E	mm	1790	2530
F	mm	3660/3960	3850/4190
G	mm	2300	2650
X	mm	425	425
Y	mm	290	290

### BREAKOUT FORCE

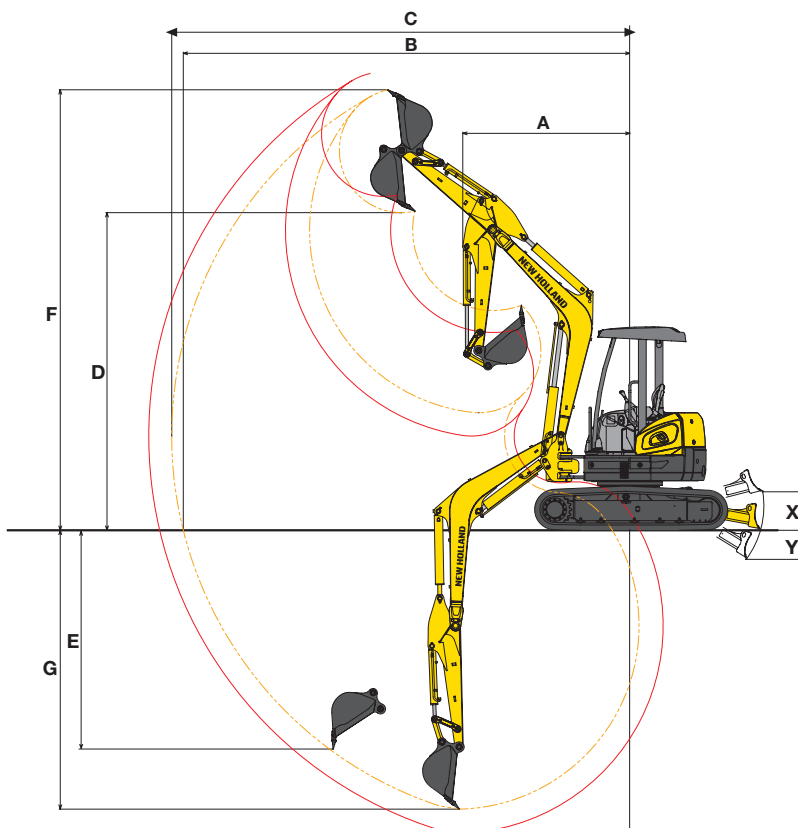
BUCKET	kN	20.0	20.0
DIPPERSTICK	kN	14.0	12.0

### E27.2SR

DIPPERSTICK	mm	1120	1370 (standard)
A	mm	2060/1830	2080/1880
B	mm	4510	4770
C	mm	4640	4890
D	mm	2970/3170	3170/3380
E	mm	2320	2560
F	mm	4260/4470	4470/4690
G	mm	2540	2790
X	mm	445	445
Y	mm	335	335

### BREAKOUT FORCE

BUCKET	kN	22.0	22.0
DIPPERSTICK	kN	15.0	13.0



# LIFTING CAPACITY

VALUES ARE EXPRESSED IN TONNES

RADIUS OF LOAD													
1.0 m	1.5 m		2.0 m		2.5 m		3.0 m		3.5 m		4.0 m		At max reach
	FRONT	SIDE	FRONT	SIDE	FRONT	SIDE	FRONT	SIDE	FRONT	SIDE	FRONT	SIDE	REACH m

## E20.2SR DIPPERSTICK 1 330 mm

HEIGHT	1.0 m		1.5 m		2.0 m		2.5 m		3.0 m		3.5 m		4.0 m		At max reach
+3.5 m									0.41	0.37					
+3.0 m									0.39	0.34					
+2.5 m															
+2.0 m									0.40	0.34	0.38	0.26			
+1.5 m							0.51	0.45	0.46	0.33	0.37	0.25			
+1.0 m					0.90	0.60	0.63	0.43	0.47	0.32	0.37	0.25			0.31 0.20 3.80
+0.5 m					0.86	0.57	0.61	0.41	0.46	0.31	0.36	0.24			
0			0.86	0.86	0.84	0.55	0.59	0.39	0.45	0.30	0.36	0.24			
-0.5 m	0.94	0.94	1.28	0.89	0.84	0.55	0.59	0.39	0.45	0.30	0.36	0.24			
-1.0 m	1.36	1.36	1.44	0.90	0.85	0.55	0.59	0.39	0.45	0.30					
-1.5 m	1.90	1.90	1.34	0.92	0.86	0.57	0.60	0.40							
-2.0 m			0.59	0.59	0.43	0.43									

## E22.2SR DIPPERSTICK 1 330 mm

HEIGHT	1.0 m		1.5 m		2.0 m		2.5 m		3.0 m		3.5 m		4.0 m		At max reach
+3.5 m															
+3.0 m							0.57	0.52							
+2.5 m									0.54	0.40					
+2.0 m							0.59	0.53	0.55	0.40					
+1.5 m					0.92	0.71	0.70	0.52	0.54	0.39	0.44	0.32			
+1.0 m					0.97	0.67	0.70	0.52	0.54	0.38	0.43	0.31			0.42 0.30 3.80
+0.5 m					0.94	0.65	0.68	0.48	0.53	0.38	0.43	0.31			
0					0.94	0.64	0.67	0.48	0.52	0.37					
-0.5 m	1.34	1.34	1.54	1.00	0.94	0.65	0.67	0.47	0.52	0.37					
-1.0 m	1.97	1.97	1.50	1.02	0.95	0.66	0.68	0.48							
-1.5 m			0.95	0.95	0.67	0.67									
-2.0 m															

## E27.2SR DIPPERSTICK 1 120 mm

HEIGHT	1.0 m		1.5 m		2.0 m		2.5 m		3.0 m		3.5 m		4.0 m		At max reach
+3.5 m							0.53	0.53							
+3.0 m									0.47	0.47					
+2.5 m									0.47	0.47	0.48	0.36			
+2.0 m							0.59	0.59	0.52	0.47	0.49	0.36			
+1.5 m					1.05	0.85	0.74	0.60	0.60	0.45	0.50	0.35			
+1.0 m							0.82	0.57	0.62	0.44	0.49	0.35			0.40 0.28 4.00
+0.5 m					0.98	0.77	0.80	0.56	0.61	0.43	0.49	0.34			
0					1.14	0.77	0.79	0.55	0.60	0.42	0.48	0.33			
-0.5 m	1.08	1.08	1.28	1.28	0.14	0.77	0.79	0.55	0.60	0.42	0.48	0.33			
-1.0 m	1.62	1.62	1.67	1.30	1.15	0.78	0.80	0.55	0.61	0.42					
-1.5 m			1.27	1.27	0.91	0.80	0.67	0.56							
-2.0 m					0.53	0.53									

## E27.2SR DIPPERSTICK 1 370 mm

HEIGHT	1.0 m		1.5 m		2.0 m		2.5 m		3.0 m		3.5 m		4.0 m		At max reach
+4.0 m							0.47	0.47							
+3.5 m									0.42	0.42					
+3.0 m											0.42	0.36			
+2.5 m											0.41	0.36			
+2.0 m									0.46	0.46	0.44	0.36	0.40	0.28	
+1.5 m					0.86	0.86	0.64	0.61	0.54	0.45	0.48	0.35	0.40	0.28	
+1.0 m					1.18	0.81	0.80	0.58	0.62	0.44	0.49	0.34	0.40	0.27	0.36 0.25 4.20
+0.5 m					1.14	0.77	0.80	0.55	0.61	0.42	0.48	0.33	0.39	0.27	
0			0.64	0.64	1.13	0.76	0.79	0.54	0.60	0.41	0.48	0.33	0.39	0.27	
-0.5 m	0.86	0.86	1.08	1.08	1.13	0.76	0.78	0.54	0.59	0.41	0.47	0.33			
-1.0 m	1.28	1.28	1.62	1.27	1.14	0.76	0.79	0.54	0.59	0.41	0.48	0.33			
-1.5 m	1.81	1.81	1.56	1.29	1.06	0.78	0.78	0.55	0.56	0.42					
-2.0 m			0.99	0.99	0.70	0.70	0.45	0.45							



# PARTS & SERVICE

**T**he New Holland dealer network is, in itself, the best guarantee of continued productivity for the machines it delivers to its customers. New Holland service technicians are fully equipped to resolve all maintenance and repair issues, with each and every service point providing the high standards they are obliged to observe under New Holland's stringent quality guidelines. The New Holland global parts network ensures fast, reliable, replacement parts for less downtime, increased productivity and, of course, profitable operation for its customers.

## AT YOUR OWN DEALERSHIP

The information contained in this brochure is intended to be a general nature only. The NEW HOLLAND KOBELCO CONSTRUCTION MACHINERY S.p.A. company may at any time and from time to time, for technical or other necessary reasons, modify any of the details or specifications of the product described in this brochure. Illustrations do not necessarily show products in standard conditions. The dimensions, weights and capacities shown herein, as well as any conversion data used, are approximate only and are subject to variations within normal manufacturing techniques.

Published by NEW HOLLAND KOBELCO CONSTRUCTION MACHINERY S.p.A. - [www.newholland.com](http://www.newholland.com)  
 Printed in Italy - LEADER Firenze - Cod. 73301171 - INB - Printed 02/05



A product of the global alliance between CNH and KOBELCO



NEW HOLLAND IS A BRAND OF CNH.  
**CNH: THE TOTAL SOLUTIONS CHOICE FOR YOUR SPECIFIC BUSINESS NEEDS.**