



# Self-Propelled Articulating Booms

## Z-34/22 DC & Bi-Energy

### Specifications

Models	Z-34/22 DC		Z-34/22 Bi-Energy	
Measurements	US	Metric	US	Metric
Working height maximum*	40 ft 6 in	12.52 m	40 ft 6 in	12.52 m
Platform height maximum	34 ft 6 in	10.52 m	34 ft 6 in	10.52 m
Horizontal reach maximum	22 ft 3 in	6.78 m	22 ft 3 in	6.78 m
Up and over clearance maximum	15 ft	4.57 m	15 ft	4.57 m
▲ Platform length	2 ft 6 in	0.76 m	2 ft 6 in	0.76 m
▲ Platform width	4 ft 8 in	1.42 m	4 ft 8 in	1.42 m
▲ Height - stowed	6 ft 7 in	2.00 m	6 ft 7 in	2.00 m
▲ Length - stowed	18 ft 6 in	5.64 m	18 ft 6 in	5.64 m
▲ Storage height	7 ft 5 in	2.26 m	7 ft 5 in	2.26 m
▲ Storage length	13 ft 5 in	4.08 m	13 ft 5 in	4.08 m
▲ Width	5 ft 8 in	1.73 m	5 ft 8 in	1.73 m
▲ Wheelbase	6 ft 2 in	1.88 m	6 ft 2 in	1.88 m
▲ Ground clearance - center	6 in	0.15 m	6 in	0.15 m

### Productivity

Lift capacity	500 lbs	227 kg	500 lbs	227 kg
Platform rotation	180°		180°	
Vertical jib rotation	139°		139°	
Turntable rotation	355° non-continuous		355° non-continuous	
Turntable tailswing	zero		zero	
Drive speed - stowed	4.0 mph	6.4 km/h	4.0 mph	6.4 km/h
Drive speed - raised**	.68 mph	1.1 km/h	.68 mph	1.1 km/h
Gradeability - stowed***	30%		30%	
Turning radius - inside	5 ft 9 in	1.75 m	5 ft 9 in	1.75 m
Turning radius - outside	13 ft 1 in	4 m	13 ft 1 in	4 m
Controls	24V DC proportional		24V DC proportional	
Tires - air filled	9 x 14.5 in		9 x 14.5 in	

### Power

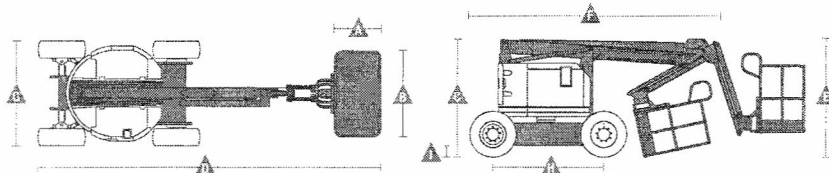
Power Source	48V DC (eight 6 V batteries 315 Ah capacity)	48V DC (eight 6 V batteries 315 Ah capacity) with Tier IV Kubota 13.3 Hp (9.9 kw) diesel driven alternator
Auxiliary Power Unit	24V DC	24V DC
Hydraulic Tank Capacity	4 gal	15.1 L
Fuel Tank Capacity		9.3 gal
		35.2 L

### Weight\*\*\*\*

11,000 lbs	4,990 kg	12,000 lbs	5,443 kg
------------	----------	------------	----------

### Standards Compliance

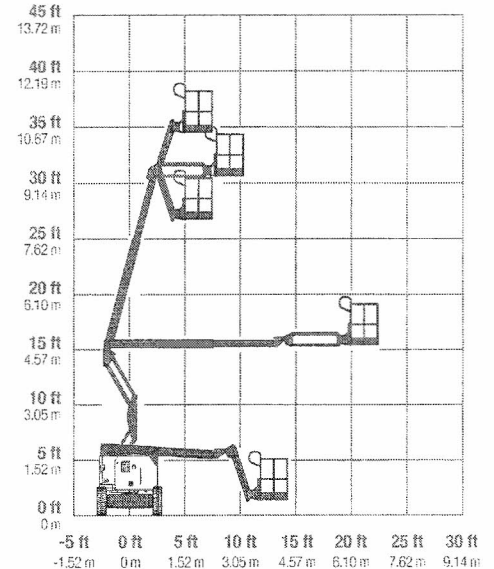
ANSI A92.5, CSA B354.4, EN 280, AS 1418.10



\* The metric equivalent of working height adds 2 m to platform height. U.S. adds 6 ft to platform height.  
 \*\* In lift mode (platform raised), the machine is designed to operate on firm, level surfaces only.  
 \*\*\* Gradeability applies to driving on slopes. See operator's manual for details regarding slope ratings.  
 \*\*\*\* Weight will vary depending on options and/or country standards.

www.genielift.com

Range Of Motion Z-34/22 DC/Bi



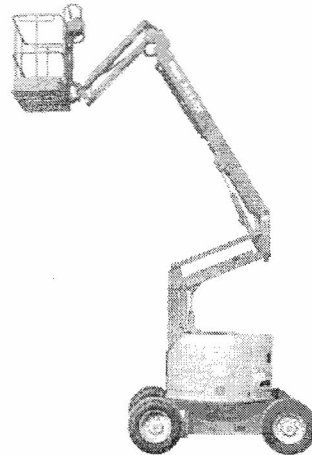


# Self-Propelled Articulating Booms

## Z<sup>™</sup>-34/22 DC & Bi-Energy

### Features

Standard Features	Easily Configured To Meet Your Needs	Options & Accessories
<b>Measurements</b> <ul style="list-style-type: none"> <li>• 40 ft 6 in (12.52 m) working height</li> <li>• 22 ft 3 in (6.76 m) horizontal reach</li> <li>• 15 ft (4.57 m) up and over clearance</li> <li>• Up to 500 lb (227 kg) lift capacity</li> </ul> <b>Productivity</b> <ul style="list-style-type: none"> <li>• 4 ft (1.22 m) jib boom with 139° working range</li> <li>• Self-leveling platform</li> <li>• Hydraulic platform rotation</li> <li>• Fully proportional controls</li> <li>• Thumb rocker steer</li> <li>• Drive enable</li> <li>• AC power to platform</li> <li>• Horn</li> <li>• Hour meter</li> <li>• Tilt alarm</li> <li>• Descent alarm</li> <li>• 355° non-continuous turntable rotation</li> <li>• Locking turntable covers (Bi-Energy only)</li> <li>• Zero tailswing</li> </ul> <b>Power</b> <ul style="list-style-type: none"> <li>• 48V deep cycle battery pack</li> <li>• 24V DC auxiliary power</li> <li>• On board alternator powered by Tier IV Kubota 13.3 hp (9.9 kW) engine (Bi-energy model only)</li> <li>• Battery charge indicator (BCI)**</li> <li>• Universal 30A battery smart charger</li> </ul>	<b>Platform Options</b> <ul style="list-style-type: none"> <li>• Steel 4 ft 8 in (1.42 m) (standard)</li> <li>• Steel 3 ft 10 in (1.17 m)</li> </ul> <b>Jib</b> <ul style="list-style-type: none"> <li>• 4 ft (1.22 m) jib boom</li> </ul> <b>Power</b> <ul style="list-style-type: none"> <li>• 48V DC power source</li> </ul> <b>Drive</b> <ul style="list-style-type: none"> <li>• 2WD</li> </ul> <b>Tire Options</b> <ul style="list-style-type: none"> <li>• Industrial air-filled (standard ANSI/CSA)</li> <li>• Industrial foam-filled (standard CE/AUS)</li> <li>• Industrial non-marking air-filled</li> <li>• Industrial non-marking foam-filled</li> <li>• Sealtant treated air-filled</li> </ul>	<b>Productivity Options</b> <ul style="list-style-type: none"> <li>• Platform swing gate</li> <li>• Half-mesh platform inserts with swing gate</li> <li>• Platform top auxiliary rail</li> <li>• Air line to platform</li> <li>• Aircraft protection package*</li> <li>• Fire resistant hydraulic oil</li> <li>• Biodegradable hydraulic oil</li> <li>• Hostile environment package</li> <li>• Tool tray</li> <li>• Fluorescent tube caddy</li> <li>• Pipe cradle (pair)</li> <li>• Flashing beacon</li> <li>• Platform work lights</li> <li>• Lockable platform control box cover</li> </ul> <b>Power Options</b> <ul style="list-style-type: none"> <li>• AGM batteries</li> <li>• EE UL583 Fire Protection rating (DC models only)</li> <li>• Battery charge indicator (BCI)**</li> <li>• Low voltage interrupt with BCI</li> <li>• Cold Weather Package (Bi-Energy only)</li> <li>• 800 watt 120 V AC power inverter (DC only)</li> </ul>



\* Reduces platform weight capacity to 440 lbs  
 \*\* Standard on Bi-Energy only.

#### Genie United States

18540 NE 76th Street  
 P.O. Box 97000  
 Redmond, Washington 98073-9730  
 Telephone +1 (425) 881-1800  
 Toll Free in USA/Canada +1 (800)-336-1600  
 Fax +1 (425) 883-3475

#### Genie Europe

The Maltings  
 Wharf Road  
 Grantham NG31 6BH  
 UK  
 Telephone +44 (0)1476 554333  
 Fax +44 (0)1476 554334  
 Email: AWP-infoEurope@terex.com

#### Distributed By:

Effective Date: February 2012. Product specifications and details are subject to change without notice or obligation. The photographs and/or drawings in this document are for illustration purposes only. Refer to the appropriate Genie's Manual for safety instructions on the operation of the equipment. FAILURE to follow the appropriate Operator's Manual when using our equipment or to otherwise use responsibly may result in serious injury or death. THE ONLY warranty applicable to our equipment is the standard written warranty applicable to the particular product and sale. We make no other warranties, express or implied. Products and services listed may be trademarks, service marks or trade names of Terex Corporation or its subsidiaries in the USA and/or other countries. Genie is a registered trademark of Terex South Dakota, Inc. © 2012 Terex Corporation.

Z<sup>™</sup>-34/22 DC (9710), Part No. 120355

www.genielift.com